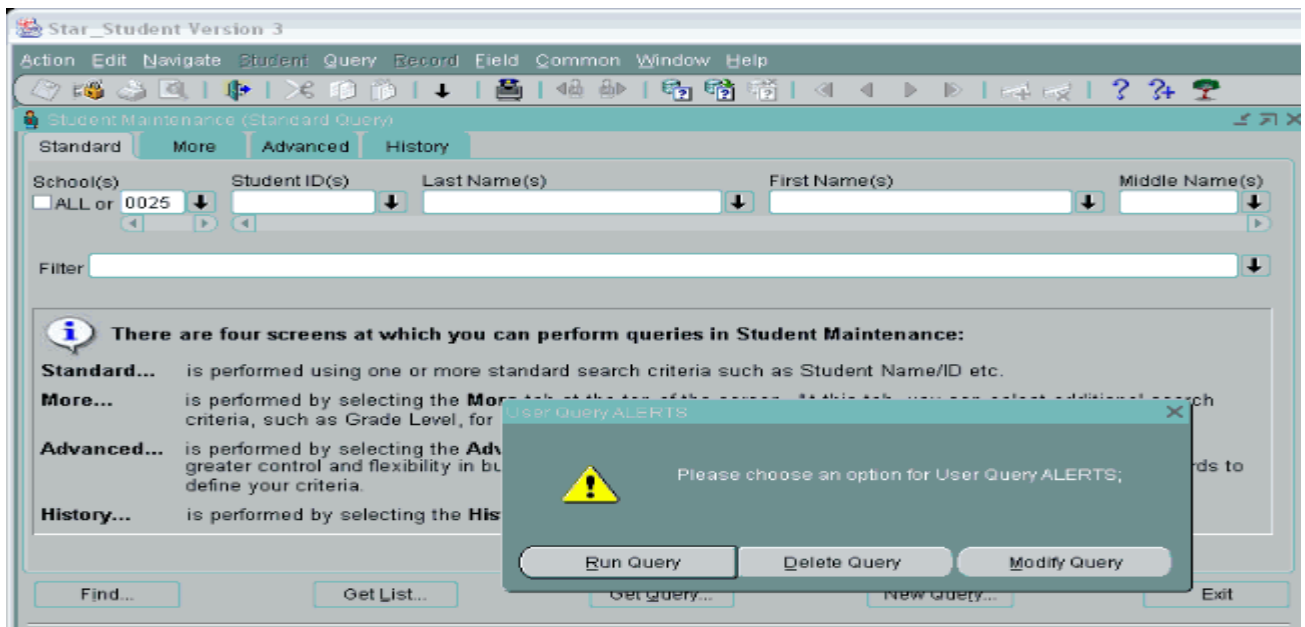
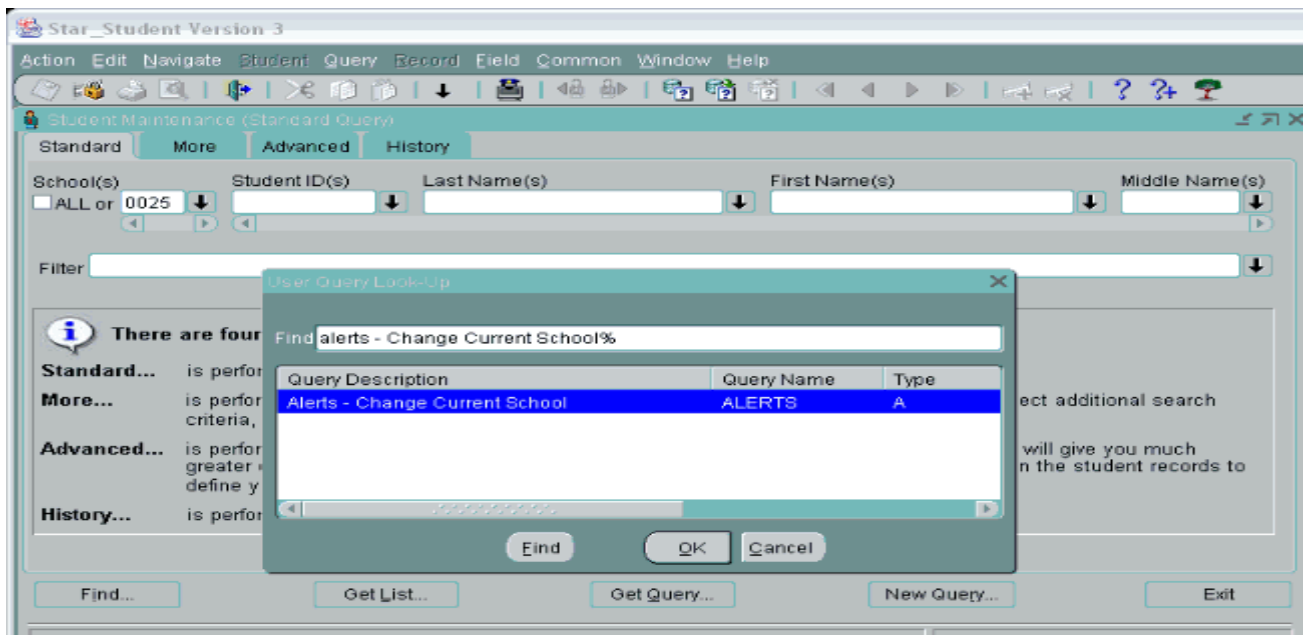


SSMS Star Student Advanced Queries

Running Pre-Written Advanced Queries:

1. Student Information Module
2. Student Lookup, Get Query
3. Select Query (Queries are searched by first letter in Description)
4. Available Queries
 - a. ALERTS (Lists Students with Alert on Main Page – Must Change School)
 - b. NOTES (Lists Students with Notes on Main Page – Must Change School)
 - c. Special Ed List (Lists Student with Special Ed. Options – Must Change School)
 - d. 504 (Lists Students with 504 Option in User Field 2 – Must Change School)
 - e. PIN (Lists all Students with PIN number in numerical sequence – all Schools)
 - f. FREE (Lists Students with Program Code X – Must Change School)
 - g. REDUCE (Lists Students with Program Code Y – Must Change School)
 - h. PROGRAM (Lists Student Program Codes Assigned – Must Change School)
 - i. OUTZONE (Lists Students who have Resident School Field – Select School)
5. Modify Query (to change School Number)
 - a. In Middle Section, “Where”, Change Current School Number Between “
 - b. Select Find
6. Save or Print Student List



Star_Student Version 3

Action Edit Navigate Student Query Record Field Common Window Help

Student Maintenance (Advanced Query)

Standard More Advanced History

Display SBASE.LAST_NAME ,SBASE.FIRST_NAME ,SBASE.GENERIC_ALERT

Where SVIEW.STUDENT_ID=SBASE.STUDENT_ID and MAINWV.STUDENT_ID=SBASE.STUDENT_ID and SVIEW.START_YY='06' and M

Order SBASE.LAST_NAME

STUDENT'S MAIN RECORD	STUDENT MAIN,SCHOOL,C	MAIN INFORMATION VIEW (
SBASE	SVIEW	MAINWV	
ACCT_SCHOOL	ACTIVE	ACTIVE	
AM_INDIAN_ETH	BIRTH_DATE	ADULT_CHILD	
ASIAN_ETH	BUILDING	ADV_PLACE_CODE	
AT_RISK	BUS_DISTANCE	ALTERNATIVE_PROGRA	
AT_RISK_DATE	BUS_ROUTE_AM	AM_INDIAN_ETH	
BIRTH_DATE	BUS_ROUTE_PM	APT	
BLACK_ETH	BUS_STOP_AM	AREA_CODE	
CURRENT_SCHOOL	BUS_STOP_PM	ASIAN_ETH	

and or

= <>

> <

in not

()

Find... Get List... Get Query... New Query... Exit